

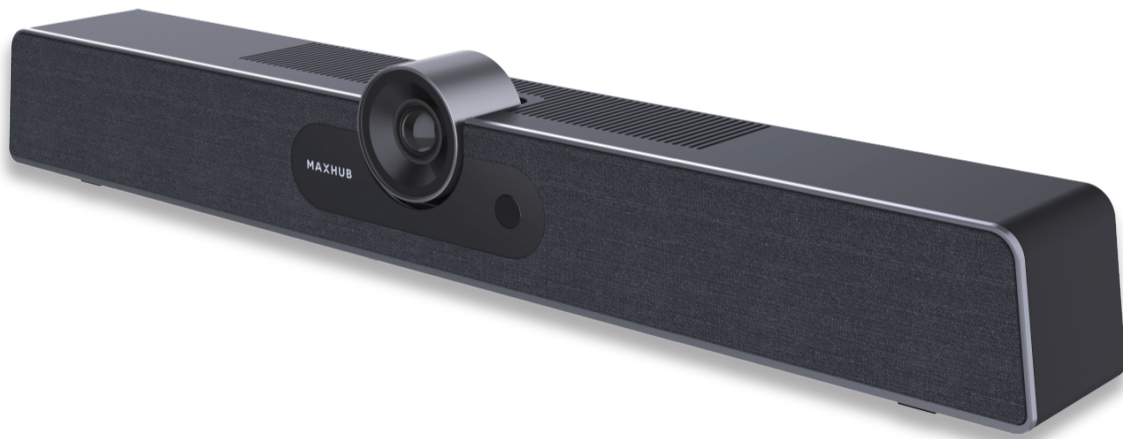


MAXHUB UC S15

Ultra-Wide Angle, All-in-One Collaboration Videobar for Huddle & Small Rooms

The MAXHUB UC S15 is a 4K wide-angle BYOD Videobar with an outstanding acoustic solution, as well as a meeting platform for huddle and small meeting rooms. With a simple interface, a single-click launcher, and a plethora of collaborative tools, it's a breeze to get started. Moreover, cooperate with WT13M, UC S15 embed BYOM, can share content as well as camera, microphone and speaker easily.

In addition, UC S15's BYOM integration with WT13M makes it simple to share content, as well as the device's built-in camera, microphone, and speakers.



All-in-one design

Plug-and-play video bar with built-in camera, speaker, microphone, making it extremely easy to deploy



Auto framing

Automatically adjust the framing according to number and positions of room participants



Speaker Tracking

Always focus on the active speaker, automatically switch the close-up image from one speaker to another.



Intelligent Frame*

provides a separate frame for each participant in the room.



AI Noise Reduction

Output a natural sound with filtering unwanted background noise



Wireless Sharing

Wireless content sharing through wireless dongle*, MAXHUB Share app, airplay, Chromecast, etc.



Wireless BYOD

Connect to the built-in camera, speaker, microphone of UC 15 wirelessly through MAXHUB wireless dongle* or MAXHUB share app



Cloud Device Management

With maxhub pivot, IT managers could easily manage and maintain UC S15 from the cloud.

*Intelligent Frame would be available in 2024 Q1, up to 6 individual frame
*wireless share dongle availability varies by country, pls check with your reseller

Camera

Pixel	12 M		
Sensor	1/2.3-inch 12 MP Sony sensor		
ZOOM	5x Digital Zoom		
Resolution and Frame Rate:			
MJPEG/H264:	(1) 3840 × 2160	(2) 2560 × 1440	(3) 1920 × 1080
	(4) 1280 × 720	(5) 1024 × 576	(6) 960 × 540
	(7) 800 × 600	(8) 640 × 480	(9) 640 × 360
	(10) 480 × 270	(11) 352 × 288	(12) 320 × 240
	(13) 320 × 180		
NV12/YUY2	(1) 1920 × 1080	(2) 1280 × 720	(3) 640 × 360
Output Format	H.264; YUY2; MJPG		
Field of View	FOV 120° (D)		
Adjustable Angle	±15° (V)		
Focus Mode	Fixed-Focus		
Focus Distance	1m		
Special Features	① Auto Framing: automatic FOV adjustment to fit in all participants; ② Speaker Tracking: voice triggered people tracking; ③ 3 zoom presets to instantly set up the conference		

Audio**Speaker**

Sound Channel	1.1
Output Power	8 W + 3 W
Maximum Sound Pressure	83 dB SPL@1 m
Signal to Noise Ratio	>75 dB
Frequency Range	150 Hz ~ 18 kHz

Microphone

Quantity	6
Voice Pickup Range	6m / 19.7ft
Microphone Frequency Range	100 Hz ~ 7.5 kHz
Special Features	Noise Reduction, Echo Cancellation, Anti-Reverberation, Built-in AGC Algorithm

Motion Sensor

The device would automatically go to sleep mode in which it does not send a signal to the connected display after a certain time of no human detected. And it would enter working mode automatically once there is human detected.

Input/Output Port

USB 3.0 Type-C (device)	×1
USB 3.0 Type-A (host)	×1
USB 2.0 Type-A (host)	×1
Audio Out	×1
HDMI Out (2.0)	×1
RJ45 (Ethernet, POE in)	×1

Power

Power Requirements	12 V
Standby mode power consumption	≤ 0.5 W
PoE Power	Yes (IEEE 802.3af or 802.3at)

Wi-Fi

Wi-Fi Protocol	802.11ac/n/g/b/a/ax
Working Band	2.4 GHz; 5 GHz
Working Mode	AP+STA
Working Distance	0~10 m

Bluetooth

Version	5.0
Protocol	A2DP;HFP;HSP;AVRCP;BLE
Working Distance	0-10 m

Physical Specifications

Dimension L × H × W	462 × 76 × 93 mm (18.2 × 3.0 × 3.7 inch)
Dimension (package) L × W × H	1 pc: 538 × 160 × 169 mm (21.2 × 6.3 × 6.7 inch) 4pcs: 628 × 433 × 380 mm (24.7 × 17.0 × 15.0 inch)
Net Weight	1.20 kg (2.65 lb)
Gross Weight	1 pc: 2.74 kg (6.04 lb) 4 pcs: 12.90 kg (28.44 lb)

Environmental Conditions

Operation Temperature	0 °C~40 °C
Operation Humidity	10%~90%RH
Storage Temperature	-20 °C~60 °C
Storage Humidity	10%~90%RH
Below 5000 meters	

Compatibility

Supports major VC software including ZOOM, Microsoft® Teams, Google Meet, Google Hangouts, Cisco WebEx®, RingCentral, etc.

Warranty

3 Years hot-swap
Accessories 1 year

What's in the box

- HDMI Cable 1.5 m (59.1 inch)
- USB 3.0 Cable 1.8 m (70.87 inch)
- USB 2.0 Cable 3 m (118.11 inch)
- Lens Cover
- Wall-mounted Components
- Power Adapter
- Remote Control
- User Manual

Optional Accessory

Wireless Share Dongle



WT13M / WT13S

TV Mount kits



WIB10A

Statement

Size and weight vary by configuration and manufacturing process, please refer to the actual product. The product images are for illustrative purposes only and may slightly differ in appearance, colour, size, etc. from the actual product. The description, illustrations, etc. in this document may subject to change in accordance with the latest product specification and performance. Should the above-mentioned change in the document become necessary, the document may be updated without written notice.